



ADULTS ONLY

※ Safety Guidelines

- ① Keep out of reach of minors.
 - ② Never aim at face and head.
 - ③ Stay away your eyes and ears from the muzzle.
 - ④ Wear proper eye protection when shooting the gun, or it can damage your eyes.
 - ⑤ Never modify or change its structure to increase the shooting power.
 - ⑥ Use the bbs provided or recommended by its manufacture.
 - ⑦ Make sure that no BB remains in the chamber after using.
- ⑧ **Safety is user's responsibility. GBLS Co., Ltd. including its subsidiaries and affiliates SHALL NOT BE RESPONSIBLE FOR injury, death, or damage to property, economic loss legally or morally in any manner whatsoever incurred as a result of users' handling.**

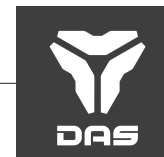


GDR15

Instruction Manual

CONTENTS

No.	Contents	Page
1	Warning	1
2	Specifications	
3	Safety Rules	2
4	Maintenance & Repair	4
5	Component Diagram & List	8
6	Trouble Shooting Guide	11



01 Warning

- ◆ This product is only for properly trained adults, and may cause serious injury when misused.
- ◆ Before using the item, check and understand this instruction manual carefully, and follow them fully for safety.

02 Specifications

Model	DAS GDR15 (for global markets)
Ammo. Type	6mm Plastic BB
Length	808 / 873mm
Item Weight	About 3.0kgs
Inner Barrel Length	363mm
Ammo. Capacity	About 60 rounds / Proprietary Magazine of DAS
Battery Type	Li-po 11.1v Battery (Not included)
Hop-Up	Adjustable
Muzzle Velocity	Pursuant to destination countries' regulation
Energy	Pursuant to destination countries' regulation
Firing Mode	Auto / Semi / Safe
Bolt Action	OK
Take Down	OK
Blow Back	OK
Air Cocking	OK
Firing Control	Proprietary Mechanical System of DAS
Package Included	PTS Centurion Arms CMR 13.5", PTS Enhanced Polymer Grip (EPG) BLK, PTS Enhanced Polymer Stock (EPS) * Accessories are subject to change.



03 Safety Rules

⚠ WARNING

- ◆ For the safe and proper handling, always pay particular attention to all of the below warnings and cautions, and observe them for yourself and others. You can check more cautions and tips from VOD on GBLs website and YouTube.

USE

- ◆ Never aim it at people or animals.
- ◆ Keep the muzzle of the airsoft gun pointed in a safe direction.
- ◆ Shoot only at proper targets. They could be broken or damaged.
- ◆ Do not shoot at hard or soft surface or the surface of water, or a ricochet may occur, and then hit someone or something you had not intended to hit.
- ◆ Use new, high-quality, plastic BBs only as a projectile.
- ◆ **HARD BBs are recommended.**
- ◆ Always wear eye protection while handling it. Do not risk your own eyes.
- ◆ Never look into the muzzle directly. Jammed BB could launch suddenly.
- ◆ Always assume that it is loaded. Never assume the chamber is empty. It could still fire jammed BB even after removing the magazine.
- ◆ Keep airsoft gun unloaded until ready to shoot.
- ◆ Keep your finger off the trigger until ready to shoot.
- ◆ Keep the selector on "SAFE" until ready to shoot.
- ◆ Make sure that no BB remains in the chamber after using.
- ◆ **Do not fire without ammunition. It could be the cause for malfunction.**
- ◆ Only use on the authorized land where full permission to shoot has been given from government. If you make it visible in public areas, people could be confused, and it may be a crime.
- ◆ Before use this item, check your government's stipulated minimum age, allowed shooting energy and required colored parts, and observe them. (Only orange tip is included in this package.)
- ◆ When transporting, carry it in a case or bag.
- ◆ You may be punished if you are shooting or displaying it for practical jokes, or threats.
- ◆ Do not handle it while under the influence of alcohol, medication, or drugs.

STORAGE

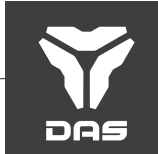
- ◆ Set the selector to SAFE position.
- ◆ Make sure all of BBs and battery are removed from the item.
- ◆ Keep out of reach of minors including children.
- ◆ Keep dry; Gun could be permanently damaged by water or moisture.
- ◆ Apply rust-preventing oil for firearms on the metal parts including outer barrel, selector, end plate, castle nut, magazine catch, bolt catch, trigger, and forward assist etc. They may be rusted due to moisture.
- ◆ ***After use the product, follow the procedure on pg7 and store it in a safe place.***

OTHERS

- ◆ It is user's sole duty to know and obey all laws governing the use and ownership of airsoft guns in your local area, and/or country.
- ◆ Never attempt to modify or convert it illegally. Modified item could be classified as a real arm under law, and you may be punished.
- ◆ **Never try to change the piston (main) spring. It may result in a malfunction.**
- ◆ **Never try to access motor height adjustment(screw) at the bottom of pistol grip. Adjusting by users may cause a malfunction as well.**



- ◆ When repair is needed, ask a skillful gun smith. A gun fixed by an user could be the cause of a malfunction, and a gun assembled poorly should be dangerous. If you cannot find a proper person, contact the distributor in your area.



04 Maintenance & Repair

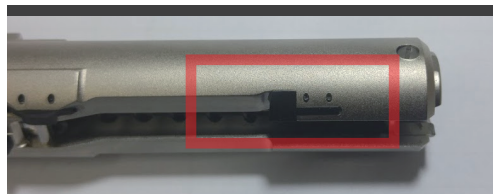
- ◆ DAS products are needed the maintenance just like actual guns.
Every time use the product, follow the instruction below, and **contact a dealer /distributor in your area if you find any problem.**
- ◆ If you cannot understand this manual fully, or if the gun does not operate well, **contact the distributor in your area.**

A. How To Check BCG(Bolt Carrier Group).



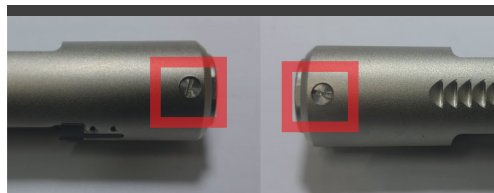
a Gas Nozzle Bolts

There should be no loose bolt.



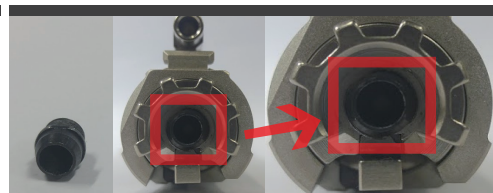
b Auto Controller Tip & Pins

Auto controller tip(black one) should be held in place and pins should not be stuck out at all.



c BCG Cover Bolts

There should be no loose bolt.



d Air nozzle

There should be no loose bolt and dent.
※ DAS's standard bolt is in black.

B. Applying Grease on BCG.

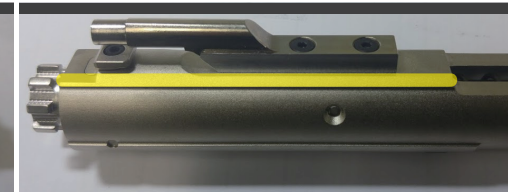
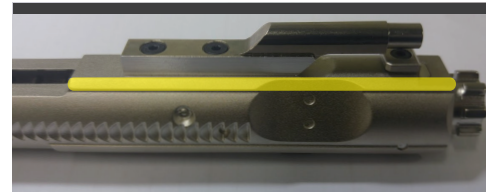
- ◆ Apply the grease on the BCG in order that the gun performs in top condition.
- ◆ Whenever use the product, check grease's remains and apply it frequently.
- ◆ Spread thinly. (Refer to Youtube VOD.)
- ◆ GBLs recommends FAG ARCANOL GREASE L252

or others has the similar materials with it;
FAG ARCANOL GREASE L252
DIN 51825/KE2G L252-40
Manufacturer : FAG



◆ Where grease should be applied

Upper Parts



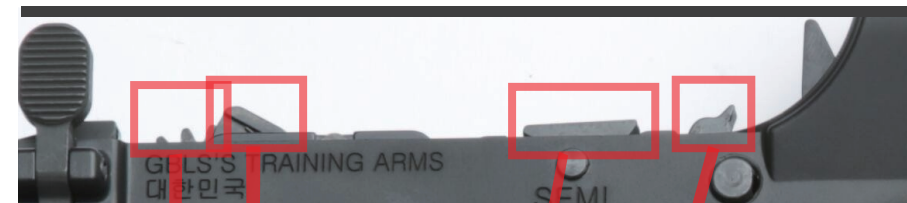
Lower Parts



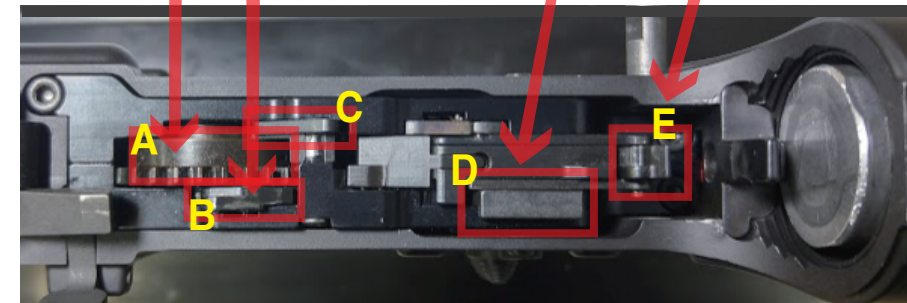
※ DAS's standard bolt is in black.

C. How To Check Gearbox

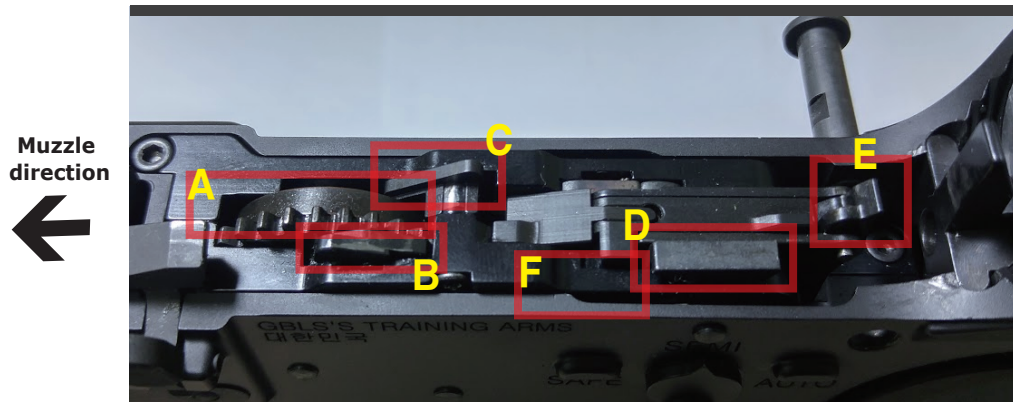
Parts Name



Muzzle direction
←



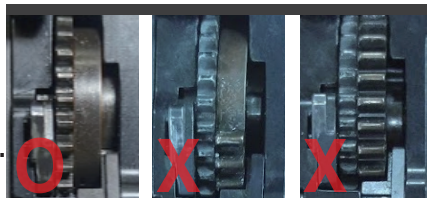
**A: 3RD GEAR SET | B: GEAR STOPER | C: POWER-OFF LEVER
D: AUTO CONTROLLER | E: SEAR**



(a) A. 3RD GEAR SET

The right gear of the 3rd gear set engages with BCG's spur gear. When any tooth comes up to the top, it affects cycle and then system will be stopped.

How to Check : 1. Take the gun down, and connect to battery. 2. Set selector to SEMI/AUTO and pull the trigger. 3. 3rd gear set starts turning. 4. Click "C"(Power-OFF Lever) and cut off electricity. 5. Check the position of right gear, and use if it is OK.



When you find a problem : Contact a dealer / distributor in your local area.

(b) B. GEAR STOPPER

It controls 3rd gear set's engagement & disengagement.

How to Check : 1. Take the gun down. 2. Press the part with yellow arrow lightly and check if it returns properly or not.



When you find a problem : A spring inside is damaged. Find Gear Stopper Spring from Spare Parts Kit(sold separately), and replace it.

(c) C. POWER-OFF LEVER

It helps to cut the system power manually.

How to Check : 1. Take the gun down. 2. Press the part with yellow arrow lightly and check if it returns properly or not.



When you find a problem : A spring inside is damaged. Find Power-Off Lever Spring from Spare Parts Kit (sold separately), and replace it.

(d) D. AUTO CONTROLLER

It controls the system when Full Auto in order that BCG troubles continuously. It is lower when SEMI, but raised when the selector sets to AUTO and pull the trigger.



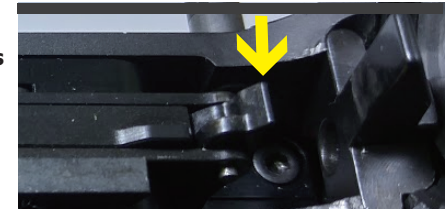
How to Check : 1. Take the gun down. 2. Set the selector to AUTO, and pull the trigger. 3. Gears starts turning, and check if Auto Controller comes up. 4. After checking, stop the system by pushing "C"(Power OFF lever).

When you find a problem : Replace Auto Controller Set. (sold separately.)

(e) E. SEAR

It holds the bolt cylinder after blowback.

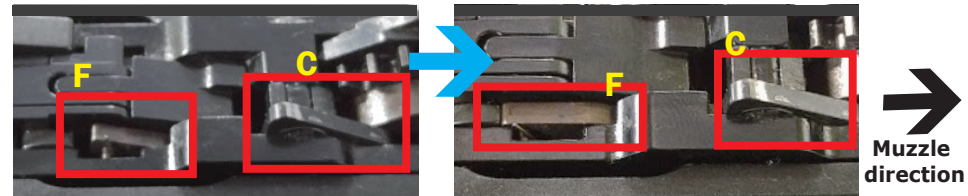
How to Check : 1. Take the gun down. 2. Press the part with yellow arrow really carefully and check if it returns properly or not.



When you find a problem : A spring inside is damaged. Replace Sear Set. (sold separately.)

D. How to store & change a battery.

- Remove bb remains in chamber, set select to SAFE, and then remove battery and magazine.
- Pull the trigger(firing) to release piston spring.
- Take the gun down.
- Press "C"(Power-OFF lever) to cut the power.



→ Once push down "C"(Power-OFF lever), "F"(Power-ON lever) goes down like right image. These steps cut off the system power, and release Power-ON/OFF spring.

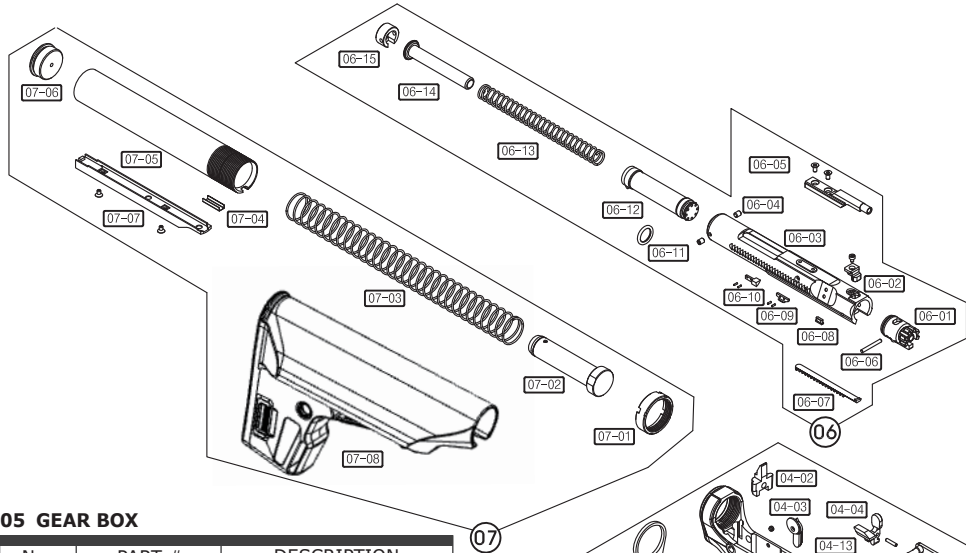
Take the same steps when a battery needs to be replaced.(refer to Youtube VOD)

Find VODs about Maintenance & Troubleshooting at GBLS Youtube channel.



05 Component Diagram & List

A. DAS GDR15



05 GEAR BOX

No.	PART #	DESCRIPTION
05-01	DAS-GDR15-GAS	GEAR BOX SET
05-02	DAS-GDR15-E016	STAINLESS STEEL BUSH
05-03	DAS-GDR15-E013	SIM PLATE
05-04	DAS-GDR15-G#3AS	3rd GEAR SET
05-05	DAS-GDR15-GSAS	SEAR OPERATOR SET
05-06	DAS-GDR15-BT002	SEAR SET BOLT
05-07	DAS-GDR15-G#2AS	2nd GEAR
05-08	DAS-GDR15-G#1AS	1st GEAR

06 BOLT CARRIER GROUP

No.	PART #	DESCRIPTION
06-01	DAS-GDR15-B006	BOLT
06-02	DAS-GDR15-B008	BOLT HOLDER
06-03	DAS-GDR15-B001	BOLT CYLINDER
06-04	DAS-GDR15-BT001	SPRING GUIDE HOLDER BOLT
06-05	DAS-GDR15-B005	GAS KEY
06-06	DAS-GDR15-PIN04	BOLT PIN
06-07	DAS-GDR15-B004	BOLT RACK GEAR
06-08	DAS-GDR15-G010	POWER-OFF
06-09	DAS-GDR15-BGLAS	GEAR LINK SET
06-10	DAS-GDR15-BFAAS	FULL AUTO TIP SET
06-11	DAS-GDR15-B015	PISTON O-RING
06-12	DAS-GDR15-B009	PISTON
06-13	DAS-GDR15-SP020	PISTON SPRING

No.	PART #	DESCRIPTION
06-14	DAS-GDR15-B010	SPRING GUIDE
06-15	DAS-GDR15-B011	BOLT COVER

07 STOCK

No.	PART #	DESCRIPTION
07-01	DAS-GDR15-R004	PIPE RING
07-02	DAS-GDR15-RBFAS	BUFFER
07-03	DAS-GDR15-SP006	BUFFER SPRING
07-04	DAS-GDR15-R006	STOCK CABLE COVER
07-05	DAS-GDR15-R002	STOCK TUBE
07-06	DAS-GDR15-R003	STOCK TUBE CAP
07-07	DAS-GDR15-R001	STOCK POSITION RAIL
07-08	DAS-GDR15-R005	PTS Enhanced Polymer Stock

01 FOREARM/BARREL

No.	PART #	DESCRIPTION
01-01	DAS-GDR15-F001	FLASH HIDER
01-02	DAS-GDR15-F002	FLASH HIDER WASHER
01-03	DAS-GDR15-F003	FLASH HIDER O-RING
01-04	DAS-GDR15-F005	OUTER BARREL
01-05	DAS-GDR15-F008	INNER BARREL
01-06	DAS-GDR15-F010	BARREL EXTENSION
01-07	DAS-GDR15-FHUAS	HOP-UP CHAMBER SET

02 FOREARM/RIS

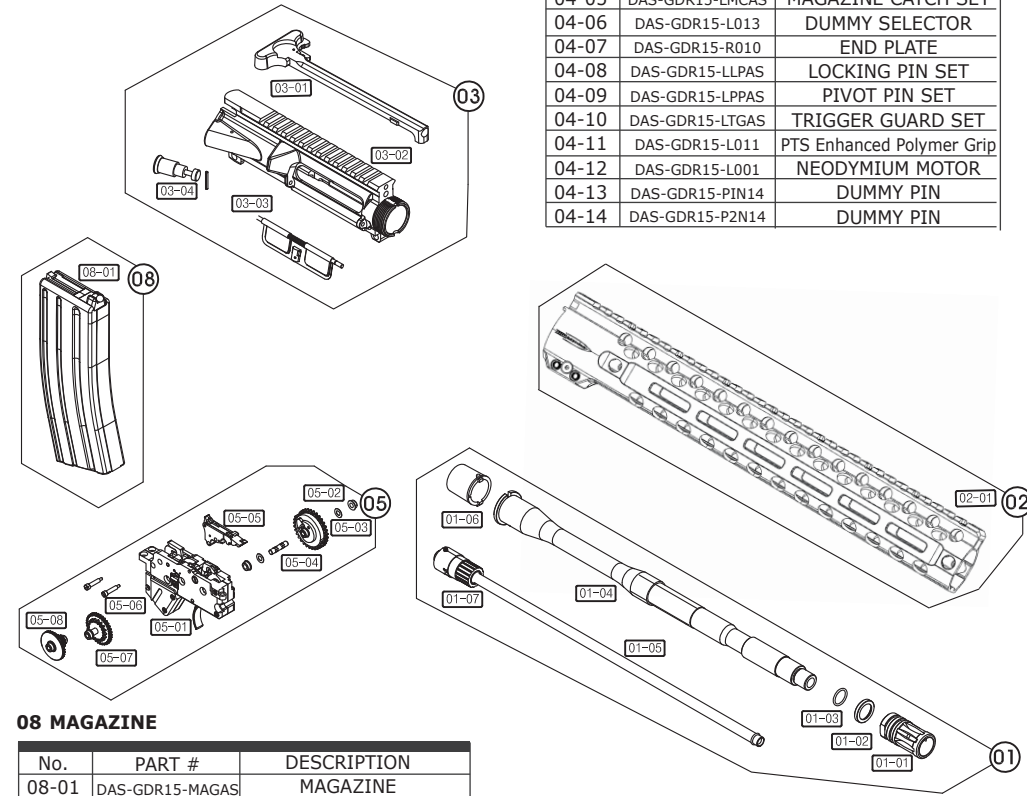
No.	PART #	DESCRIPTION
02	DAS-GDR15-FGMRAS	PTS Centurion Arms CMR 13.5"

03 UPPER RECEIVER

No.	PART #	DESCRIPTION
03-01	DAS-GDR15-U003	CHARGING HANDLE
03-02	DAS-GDR15-U001	UPPER RECEIVER
03-03	DAS-GDR15-U002	DUST COVER
03-04	DAS-GDR15-U004	FORWARD ASSIST KNOB

04 LOWER RECEIVER

No.	PART #	DESCRIPTION
04-01	DAS-GDR15-L002	LOWER RECEIVER
04-02	DAS-GDR15-LSGHAS	SPRING GUIDE HOLDER
04-03	DAS-GDR15-L004	SELECTOR LEVER
04-04	DAS-GDR15-L003	BOLT CATCH
04-05	DAS-GDR15-LMCAS	MAGAZINE CATCH SET
04-06	DAS-GDR15-L013	DUMMY SELECTOR
04-07	DAS-GDR15-R010	END PLATE
04-08	DAS-GDR15-LLPAS	LOCKING PIN SET
04-09	DAS-GDR15-LPPAS	PIVOT PIN SET
04-10	DAS-GDR15-LTGAS	TRIGGER GUARD SET
04-11	DAS-GDR15-L011	PTS Enhanced Polymer Grip
04-12	DAS-GDR15-L001	NEODYMIUM MOTOR
04-13	DAS-GDR15-PIN14	DUMMY PIN
04-14	DAS-GDR15-P2N14	DUMMY PIN



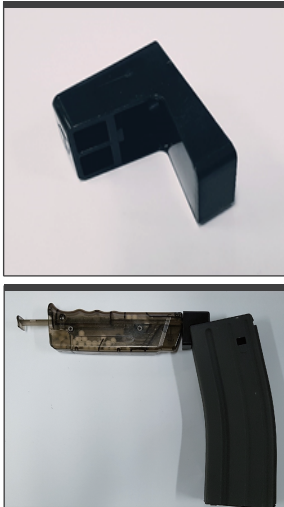
08 MAGAZINE

No.	PART #	DESCRIPTION
08-01	DAS-GDR15-MAGAS	MAGAZINE



B. SPECIAL TOOLS

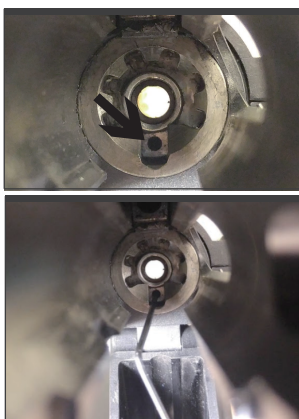
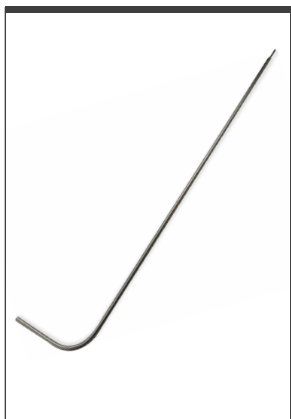
a. BB Loader Adapter



◆ GBLS's BB loader adapter works with your BB loader to mate properly with DAS's magazine for easy reloading.

Put included adapter on BB loader taking care with its direction, and load BBs like you usually do.

b. Hop-up Adjustment Wrench



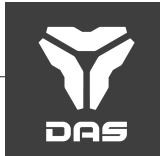
◆ Users can adjust hop-up by turning adjustment screw with black arrow.

Take down the gun, remove the bolt carrier group, and adjust hop-up with included hex wrench.

- ⌚ CW : Screw - Fasten/
Hop-up - turn down (-)
- ⌚ CCW : Screw - Loosen/
Hop-up - turn on (+)

06 Trouble Shooting Guide

SYMPTOMS	CAUSE	SOLUTIONS
Not Firing	Selector lever on Safe mode	Change selector to Semi Auto/ Full Automatic Mode.
	Low power/ Dead battery	Recharge/Replace battery.
	Wrong installation of battery	Install battery correctly.
	Blown out fuse	Replace with a new fuse.
	Ended motor's Life	Replace the motor. (Contact the distributor)
	Loose connection with motor	Tighten connectors at the bottom of motor.
Not loaded		After installing the magazine, load BB according to the position of bolt carrier group; a. If it is moved forward, pull the charging handle back. b. If the bolt is locked back, push the bolt catch.
Reduced Recoil Shock	Low battery power	Recharge/Replace battery.
Full Auto Feature not Functioning	Low battery power	Recharge/Replace battery.
	Faulty BB fed	Stop firing promptly, and remove fed BBs from chamber.
Semi Auto Feature not Functioning	Low battery power	Recharge/Replace battery.
	Unsufficient contact	Take down the gun, and push the power-off switch. (Refer to Storage section on pg.3)
Full AUTO Firing Cycle Slowing down	Low battery power	Recharge/Replace battery.
A Loud Noise while Operating	Worn or damaged gears by dry fire practice	Never do dry firing. It may result in a malfunction.
Broken Charging Handle	Charging handle is arranged improperly. Put it on proper position before shooting.	Replace changing handle.



SYMPTOMS	CAUSE	SOLUTIONS
BBs Traveling not regularly	Hop-Up is not adjusted.	Adjust hop-up by using included hop-up wrench.
	Inner barrel or Hop up bucking contaminated by oil/dirt.	Remove them and clean the inner barrel routinely.
	Worn or Damaged Hop-Up bucking	Replace the bucking.
	Improper BBs	Only use HARD BBs.
Being Wet	1. Stop operation at once, and remove the battery. 2. Wipe off water inside/outside of the body and the battery. 3. After dry them completely, and have a shot. If it does not operate well, consult GBLs for repair.	



GBLS Co., Ltd.

Website : www.gbls.co.kr | E-mail : sales@gbls.co.kr
Facebook : <https://www.facebook.com/gbls.co.kr/>
Tel : +82-51-974-9661 | Fax : +82-51-974-9662
Address : #202, POST-BI dong, Busan Technopark, 31,
Gwahaksandan, 1-ro 60beon-gil, Gangseo-gu, Busan,
Republic of Korea

COPYRIGHT(C) 2016 BY GBLs. ALL Rights RESERVED.